

尖沙咀漆咸道南 45-51 號其士大廈地下 C 及 D 舖

Shop C & D, G/F, Chevalier House, No 45-51 Chatham Road South, Tsim Sha Tsui



地圖 Map



位置 Location

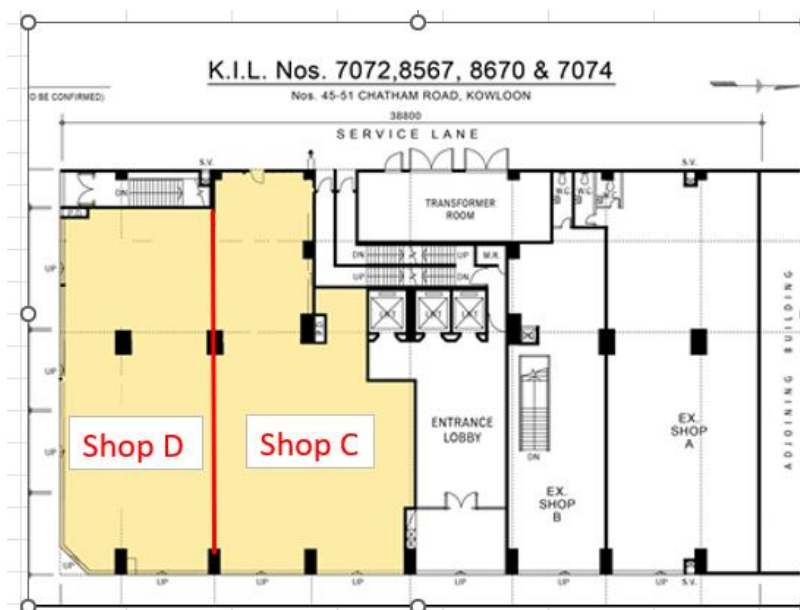
物業座落於尖沙咀漆咸道南45-51號，位於尖沙咀和尖沙咀東部交界，距離尖沙咀港鐵站只需5分鐘路程，亦可由紅磡港鐵站步行10分鐘，即可到達，地理位置優越，交通四通八達，人流熙來攘往；鄰近大型商場、銀行、商廈林立，凝聚穩定客源。

The property is located at 45-51 Chatham Road South, Tsim Sha Tsui, at the junction of Tsim Sha Tsui and Tsim Sha Tsui East. It is just a 5-minute walk from Tsim Sha Tsui MTR Station and a 10-minute walk from Hung Hom MTR Station. Traffic leads in all directions, allowing the flow of people. Close to large shopping malls, banks and commercial building which gather a stable source of customers.

物業資料 Property Details

建築面積 Gross Area	Shop C & Portion Shop D: 3578 呎 s.f Portion Shop D: 2953 呎 s.f
每季差餉 Rates per Qqt.	Shop C & Portion Shop D : HK\$24,300.00 Portion Shop D : HK\$38,700.00
每月管理費 Monthly Management Fee	Shop C & Portion Shop D: HK\$15,849.00 Portion Shop D: HK\$13,081.00
租金 Monthly Rent	Shop C & Portion Shop D: HK\$180,000.00 Portion Shop D: HK\$260,000.00
租期 Lease Period	Shop C & Portion Shop D :至 Till 15 July 2027 Portion Shop D: 至 Till 31 Oct 2026
備註 Remarks	門面闊 1 2 0 呎 樓底高 3 . 5 米
放售 For Sale	Shop C & D: HK\$2.9 億

平面圖 Floor Plan (Not to scale, For reference only)



刊登日期 Advertisement Date: 23-09-2024

物業編號 Property Number: TST/CH/GCD

Sep 2024